

Student participation in course design

An attempted experiment
Flora Botelho



INTRO

This is a project on student participation in course design. It springs from current demands from psychology students for courses that demonstrated sensitivity to cultural diversity, ethnic and racial inequality and minoritised peoples' experiences, and for content that could deepen their understanding of these themes.

THE COURSE

I drafted *Anthropological insights for Psychologists*, an elective course that aims at introducing anthropology to psychology students with focus on central themes of psychology as a discipline and a profession. The course:

- explores the variety of human existence
- relativises assumptions about mental health, neurodiversity, basic human needs, and psychic schemes
- Is anchored in ethnographic examples
- Is held in relation to concrete aspects of theory and practice of clinical, developmental, social, and critical psychology.

The course requires students to take the role of experts in psychology and be co-responsible in creating the links and contrasts between the anthropological knowledge offered in the sessions and their discipline.

The goal is to equip students with cultural sensitivity and professional reflexivity.

METHODS

1. Course description drafted and uploaded to the course platform.
2. Scheduled workshop to finalise the design of the course with students
3. Invitation on social media, students' cafes and lecture halls
4. Invitation rounds in lectures with target students.

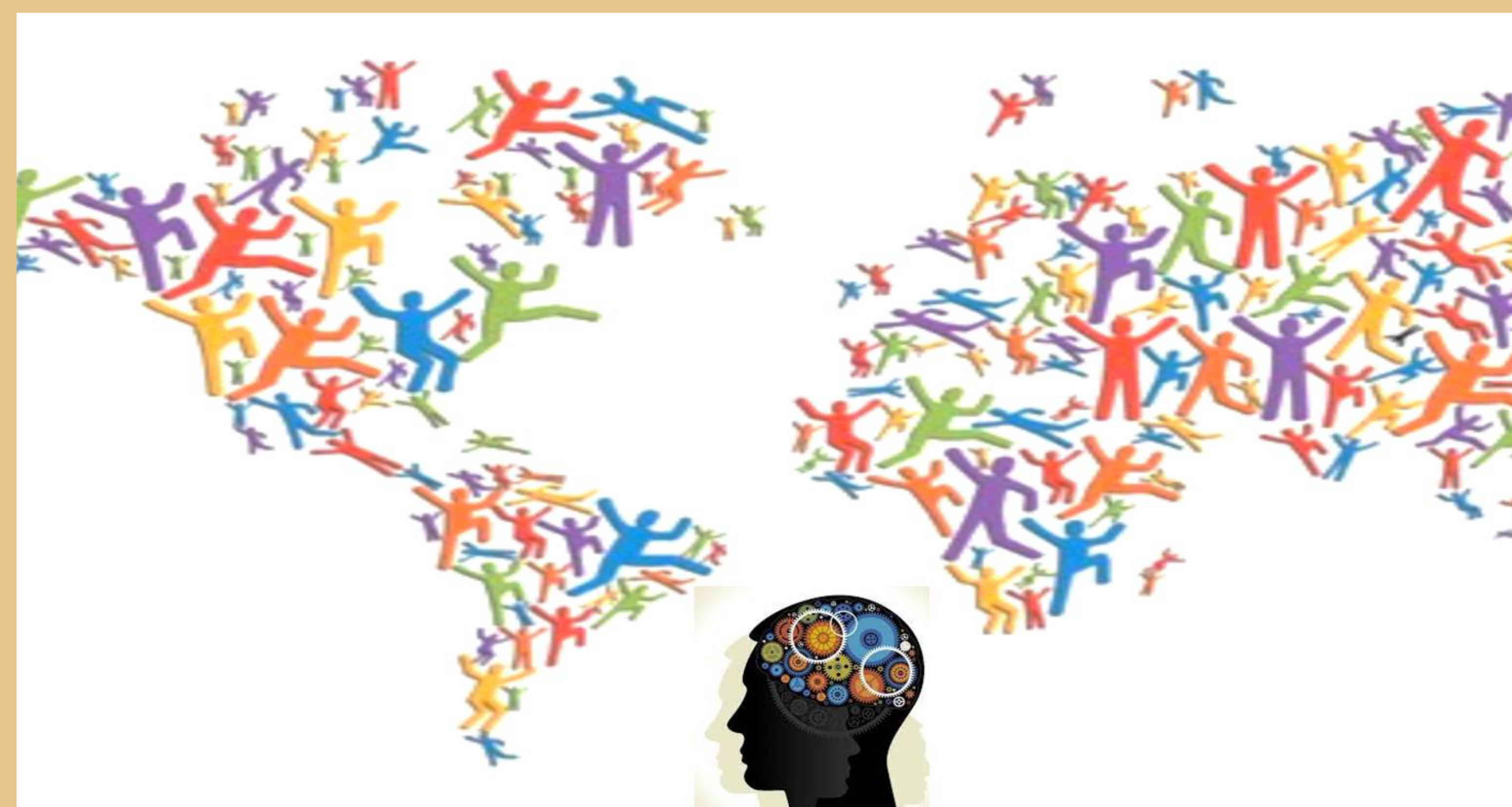
INTENDED RESULTS

1. Redefine the weekly themes covered by the course
2. Collect suggestions for reading lists
3. Set the tone for the course – a participative, inclusive environment for students and teacher.

Project: a course as a response to a student demand, made in collaboration with students, creating from start a participative learning environment.

VÆR MED TIL AT UDVIKLE FAGET *ANTROPOLOGISKE INDSIGTER TIL PSYKOLOGER*

Studererinddragelse i kursusdesign med Flora Botelho
Workshop den 12. november 16.00 -18.00



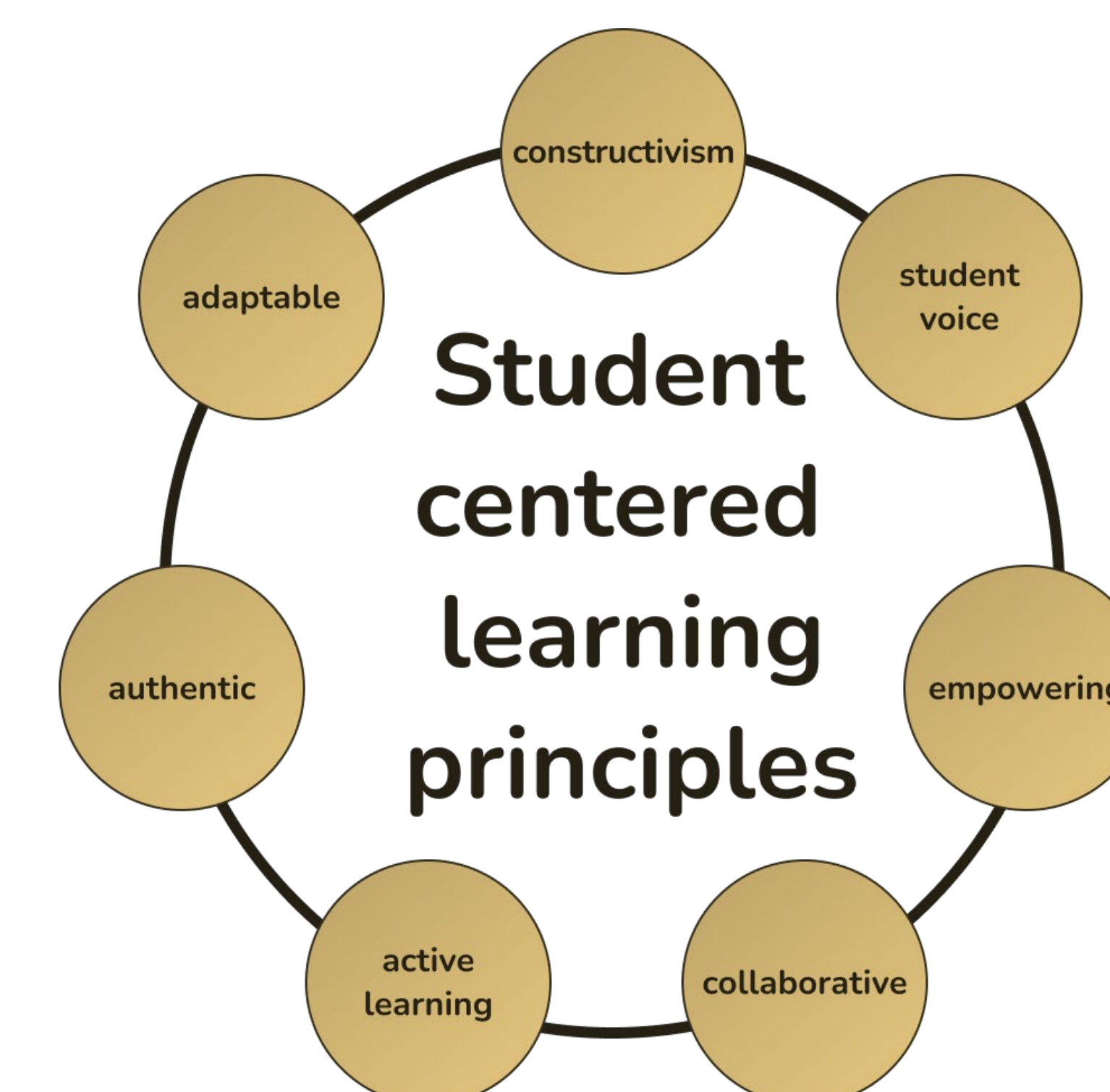
Jeg søger studerende til at bidrage med ideer, ønsker og overvejelser til pensumet og formatet af *Antropologiske Indsiger til Psykologer*, et valgfag jeg tilbyder i foråret 2025. Jeg ønsker indsats i udvalg af antropologiske emner, der virker relevante for psykologistuderende.



Se mere om faget
på kursus.dk
og skriv til
fbo@psy.ku.dk
hvis du vil deltage.



What if teacher and students
were having a conversation?



KØBENHAVNS
UNIVERSITET